

Ottawa

COMPASS



**Traffic Operations Centre
(OTOC)**

Responsibilities of OTOC:

- Manage the operation of highways 24/7 in the geographic areas the centre is responsible for
- Liaising between the OPP, Fire, Emergency Medical Services, Border Crossing Authorities, and maintenance crews
- Radio dispatching of the Area Maintenance Contractor and Road Patrol

Responsibilities of OTOC:

- Advising the public of planned and unplanned road and lane closures, and severe winter road conditions via media outlets
- Operation of all COMPASS field equipment in the local geographic area

COMPASS Subsystems Operated from OTOC:

- CCTV camera coverage on Hwy 417 in Ottawa, Hwy 401 in Kingston and the Thousand Islands Border crossing
- Ground mounted PVMS in the eastern half of the region
- Hwy 401/Hwy 137 – Thousand Islands Queue Warning System

What we had before



What we have now



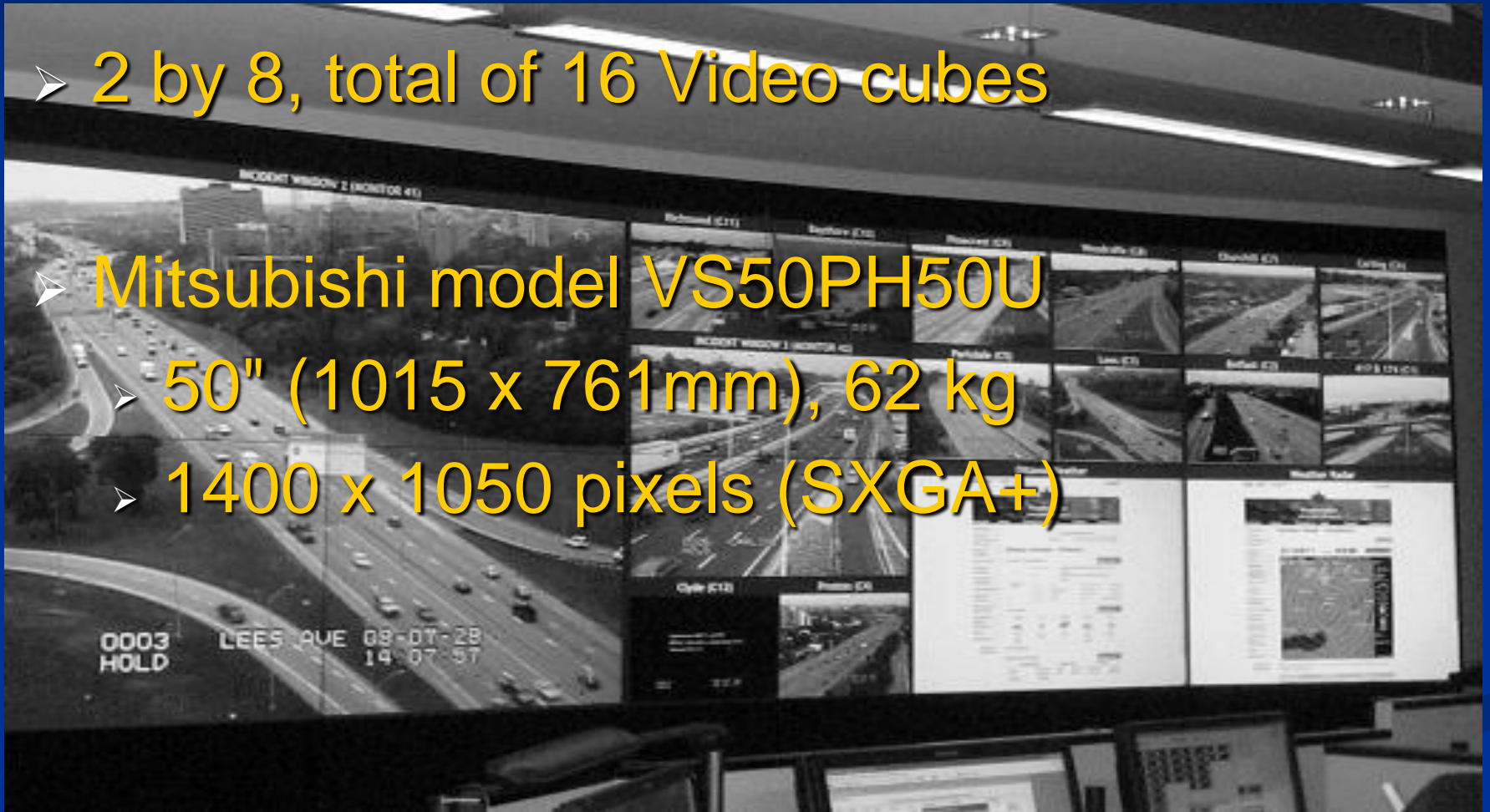
Video Wall

➤ 2 by 8, total of 16 Video cubes

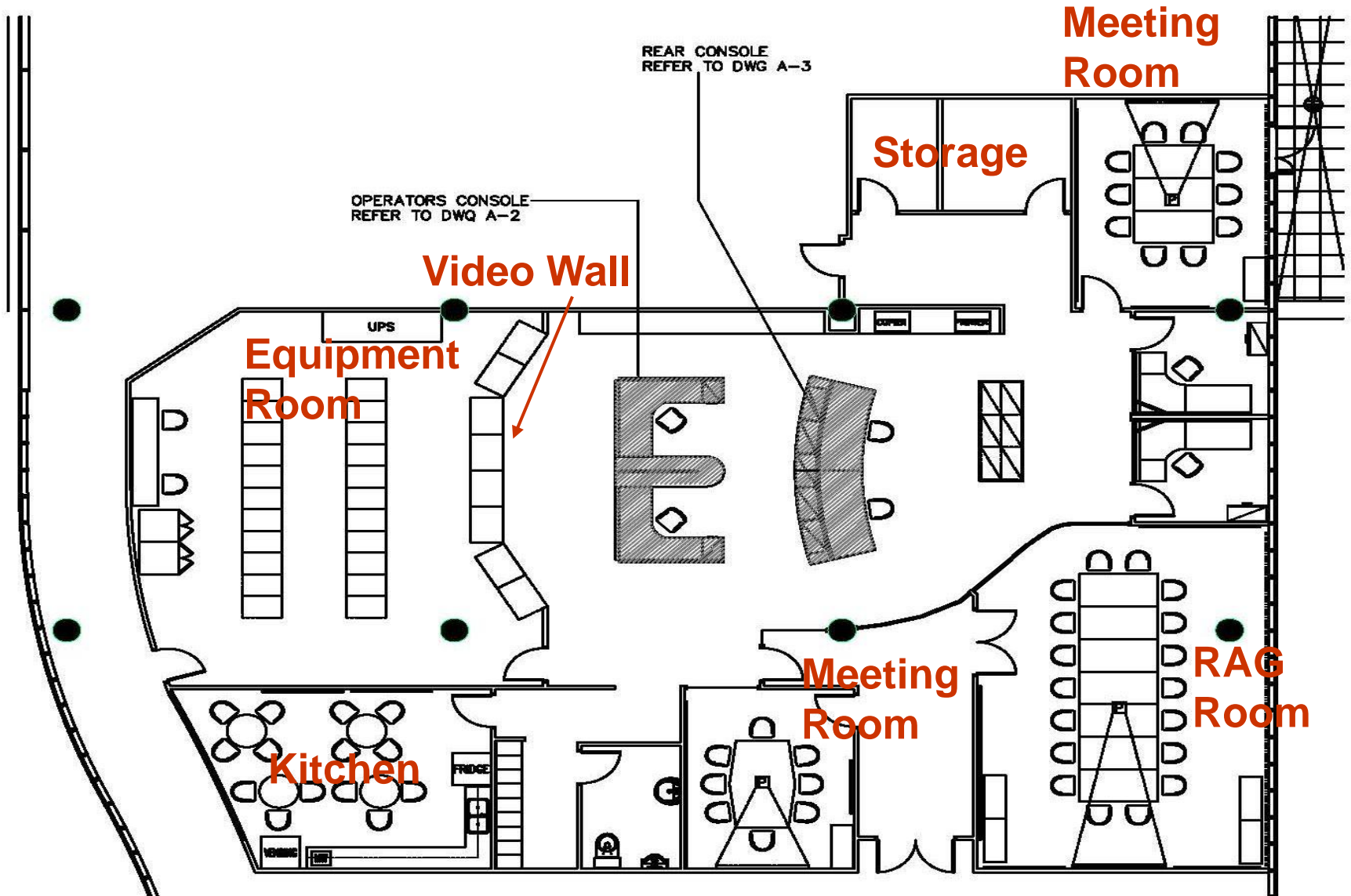
➤ Mitsubishi model VS50PH50U

➤ 50" (1015 x 761mm), 62 kg

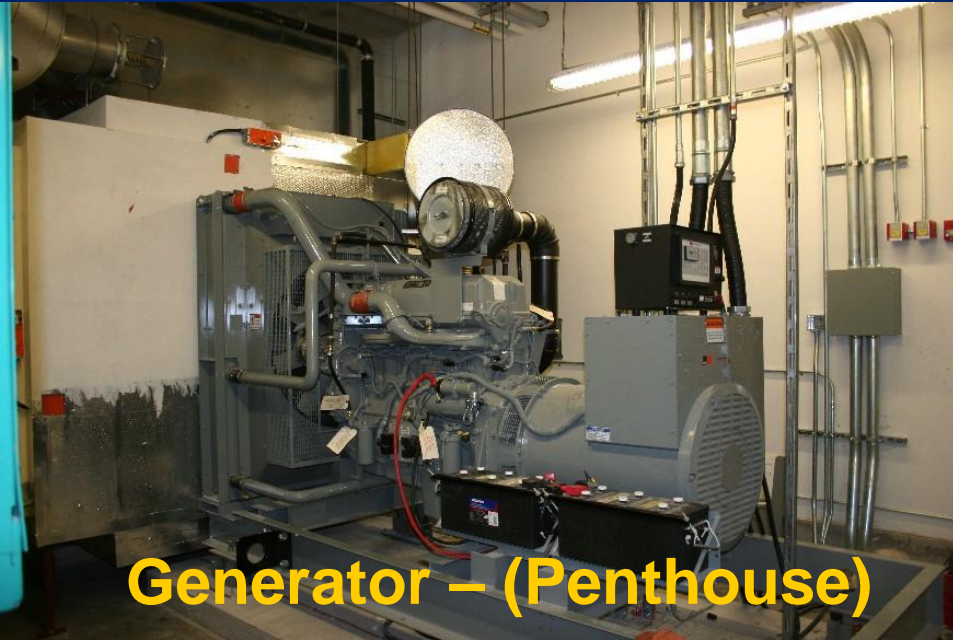
➤ 1400 x 1050 pixels (SXGA+)



OTOC Layout



OTOC Emergency Power



Generator – (Penthouse)



Fuel Tank – (Basement)



UPS – (Equipment Room)